



SimCity 4 Deluxe Tutorial

National Engineers Week
Future City® Competition

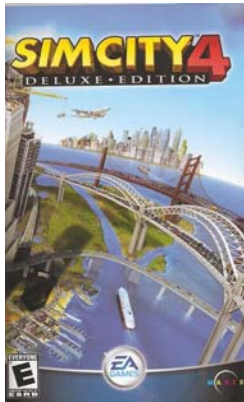


Tutorial Outline

1. Getting Started
2. Using SimCity 4 Deluxe Tutorial
3. Starter Regions
4. Develop Your Strategy
5. Create Your City
 - Understanding the Toolbars
6. Mayor Mode
 - SIMS
7. Using Graphs and Data
8. Scoresheet Updates
9. Resources



SimCity 4 Deluxe Getting Started



**Code on the
top back of
the User
Manual**



FAJ2-29UT-2QMB-HCDV-H2,N

Item	Code	Item	Code	Item	Code
1	000000	1	000000	1	000000
2	000000	2	000000	2	000000
3	000000	3	000000	3	000000
4	000000	4	000000	4	000000
5	000000	5	000000	5	000000
6	000000	6	000000	6	000000
7	000000	7	000000	7	000000
8	000000	8	000000	8	000000
9	000000	9	000000	9	000000
10	000000	10	000000	10	000000
11	000000	11	000000	11	000000
12	000000	12	000000	12	000000
13	000000	13	000000	13	000000
14	000000	14	000000	14	000000
15	000000	15	000000	15	000000
16	000000	16	000000	16	000000
17	000000	17	000000	17	000000
18	000000	18	000000	18	000000
19	000000	19	000000	19	000000
20	000000	20	000000	20	000000

EA
Electronic Arts Inc.
200 Redwood Shire Drive
Redwood City, CA 94065
©2005 EA

- Load the software
- 20 character code location (PC Version only)
- Files will automatically be stored in you're "My Document" File



SimCity 4 Deluxe Getting Started

- Utilize Your Resources (click the links below)
 - Program Handbook
 - [SimiCity 4 Deluxe Tutorial Video](#)
 - [SimiCity4 Deluxe Screen Shots](#)





Tutorial Regions

- Take a Tour of the Five Tutorial Regions
 - Use the Tutorial to Learn How to Build Your Cities:
 - Terrain
 - Streets and Highways
 - Power Stations
 - Water Supplies
 - And Other Facilities





Select a Starter Region



- Choose from one of three Starter Regions: Small/Medium/Large
- For the first year we **recommend that you build a medium city.** A small city may not grow fast enough, while a large city may be too much.

Plug Your City into the Starter Region

- Once you select your starter region, start creating your city in the space provided.

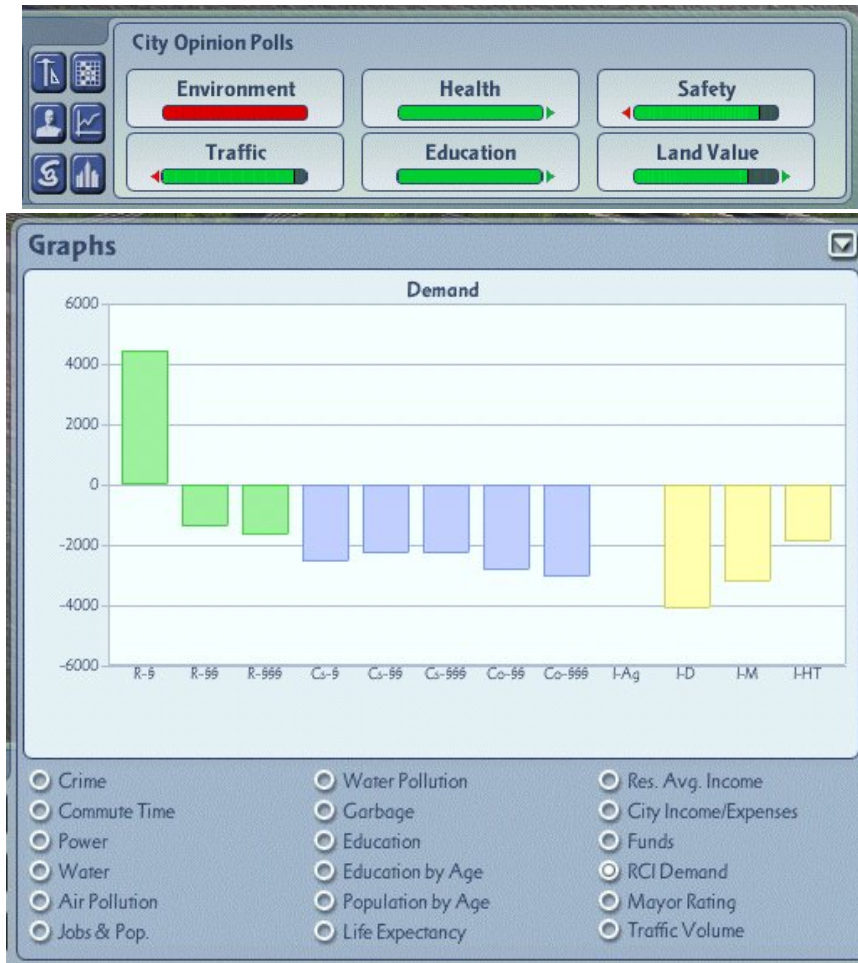


Downloading Starter Regions

- For Instructions on downloading Starter Regions please go to the Future City web-site at:
www.futurecity.org



SimCity 4 Deluxe Strategy



- THINK LOCALLY
- More refined desirability factors guide the game.
- Encourage a focus on individual Sims point of view in your city
- Encourage the Mayor to understand the interaction effects of neighboring cities on your city through the "Region View"
- The budget is more sensitive and remember that everything has a cost



SimCity 4 Deluxe Creating Your City



USE THIS MODE TO:

- Sculpt mountains, gouge valleys, level terrain, and seed forests to lay the groundwork for your creation.
- Create rivers and coastlines.
- Populate your terrain with animals that graze and roam ... and sometimes stampede into your city!



SimCity 4 Deluxe

Creating Your City



USE THE MAYOR MODE TO:

- Use for building Infrastructure
- Landscaping Tools will help develop your Terrain
- Designate Different zones in your city – Residential, Industrial, Agricultural and Commercial
- Build Highways, Roads, Railways and Airports using the Transportation tools

Mayor Mode

- Create, build and run the most realistic city you can imagine.
- Connect your metropolis with other cities you've created to form a massive region of SimCities, each sharing and competing for resources.
- Deploy police cruisers and fire trucks to the scene--you're up close and part of the action as they deal with fires, striking mobs, crime, and more.

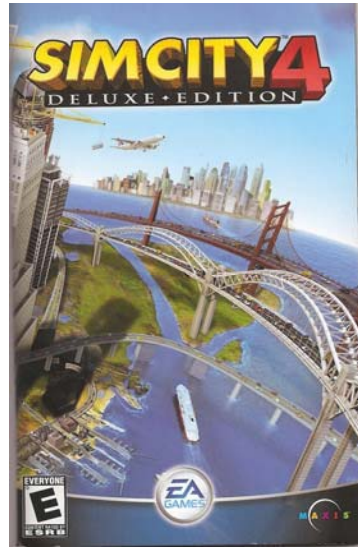


Courtesy simcity.ea.com website





Confused about the Toolbars and How To Best Use Them?



 **Click Here**





SIM Mode



- Place your Sims in your city--they'll give you valuable feedback.
- Follow your Sims to work and home.
- Experience life in the big city, from mellow traffic to major traffic jams, noontime crowds to nighttime calm.

- **Please Note: SIM MODE is not important to Future City competition outcomes. Nor is SC4 Rush Hour**





Good Button/Bad Button

Good Button: The Query Button helps you and allows you to find out critical information about your City and its Sims. This button allows you to be Proactive not Reactive.



WARNING!!!

BAD BUTTONS:
These buttons represent disaster and will destroy ALL YOUR HARD WORK... NEVER PRESS!!!!



Graphs and Data Views

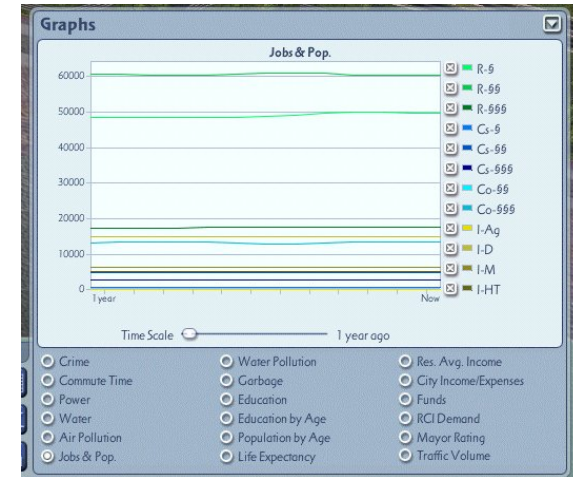
Your Graph and Data Buttons





Graphs and Data Views

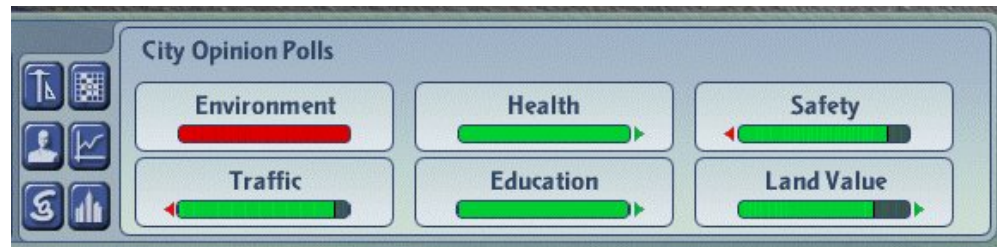
- Graphs give detailed information on different aspects of life in your city
- Query tool identifies all buildings and landmarks
- Data views are available for all major infrastructure systems (Color Coded)



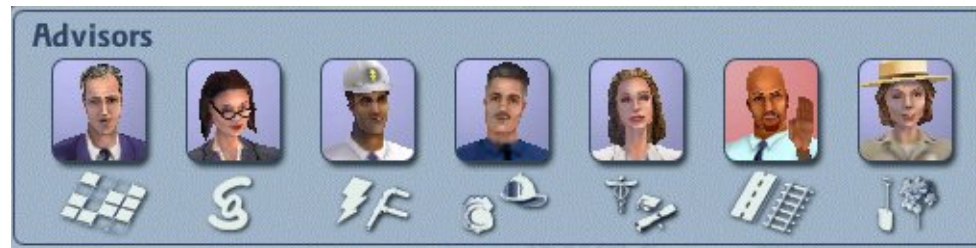


Graphs and Data Views Cont.

- City Opinion polls help with major Sim Concerns



- Advisors give critical information about your City





Graphs and Data Views Cont.

- Get detailed budget information to keep track of City expenses
- Take out loans, increase taxes or create deals to increase revenue streams

City Beautification	
Monthly Expense	Monthly Estimate
Parks and Recreation	\$1,395
Softball Field	9 \$315
Beach	2 \$10
Soccer Field	11 \$385
Tennis Court	7 \$105
Small Flower Garden	12 \$60
Large Park Green	2 \$50
Open Grass Area	10 \$50
Playground	5 \$50
Subtotal	\$1,395

Accept Cancel

Taxes	
Residential Monthly Income	
	Monthly Estimate
Low Wealth Residential (R-9)	9.1 % \$2,024
Medium Wealth Residential (R-99)	9.1 % \$7,947
High Wealth Residential (R-999)	9.1 % \$948
Subtotal	\$10,919
Commercial Monthly Income	
	Monthly Estimate
Low Wealth Commercial Service (CS-9)	8.8 % \$21
Medium Wealth Commercial Service (CS-99)	9.0 % \$1,059
High Wealth Commercial Service (CS-999)	9.0 % \$2,554
Medium Wealth Commercial Office (CO-99)	9.0 % \$506
High Wealth Commercial Office (CO-999)	9.0 % \$1,096
Subtotal	\$5,236
Industrial Monthly Income	
	Monthly Estimate
Agricultural (I-Ag)	9.0 % \$223
Dirty Industry (I-D)	9.3 % \$396
Manufacturing Industry (I-M)	9.1 % \$824
High Tech Industry (I-HT)	9.1 % \$1,616
Subtotal	\$3,059

Accept Cancel



Budget Information Examples

City Beautification

Monthly Expense	Monthly Estimate
Landmarks	\$100
The Sphinx	\$100
Parks and Recreation	\$3,840
Major League Stadium	\$340
City Zoo	\$260
Minor League Stadium	\$120
Softball Field	\$560
Beach	\$50
Soccer Field	\$840
Subtotal	\$3,940

Accept Cancel

Government

Monthly Expense	Monthly Estimate
Building Maintenance	\$910
Mayor's House	\$30
Impressive Mayor's Statue	\$80
Courthouse	\$300
Convention Center	\$220
City Hall	\$280
Subtotal	\$910

Accept Cancel

Monthly Budget

Monthly Income	Monthly Estimate
Taxes	
Residential	\$10,919
Commercial	\$5,236
Industrial	\$3,059
City Ordinances	\$0
Neighbor Deals	\$12
Business Deals	\$0
Transportation Department	\$645
Monthly Expenses	Monthly Estimate
Transportation Department	\$4,311
Public Safety Department	\$2,625
Health & Education	\$4,693
Utilities	\$6,464
City Ordinances	\$0
Neighbor Deals	\$0
City Beautification	\$1,395
Government Budget	\$310
Take Out A Loan	\$0

Current Balance	\$116,933
Monthly Income	\$19,871
Monthly Expenses	\$19,798
Month End Cash	\$117,006



CONCLUSION

- Observe Interrelationship Between:
 - Demographics
 - Economics
 - City Planning
 - Engineering



Good Luck and Enjoy Creating Your Future City



Additional Resources on SimCity 4

(Click the Links Below)

- [EA Website](#)
- [FC : Resources : SimCity Starter Regions](#)
- [SimCity 4 Strategy Guide](#)
 - Physical Book
 - [Electronic Copy](#)